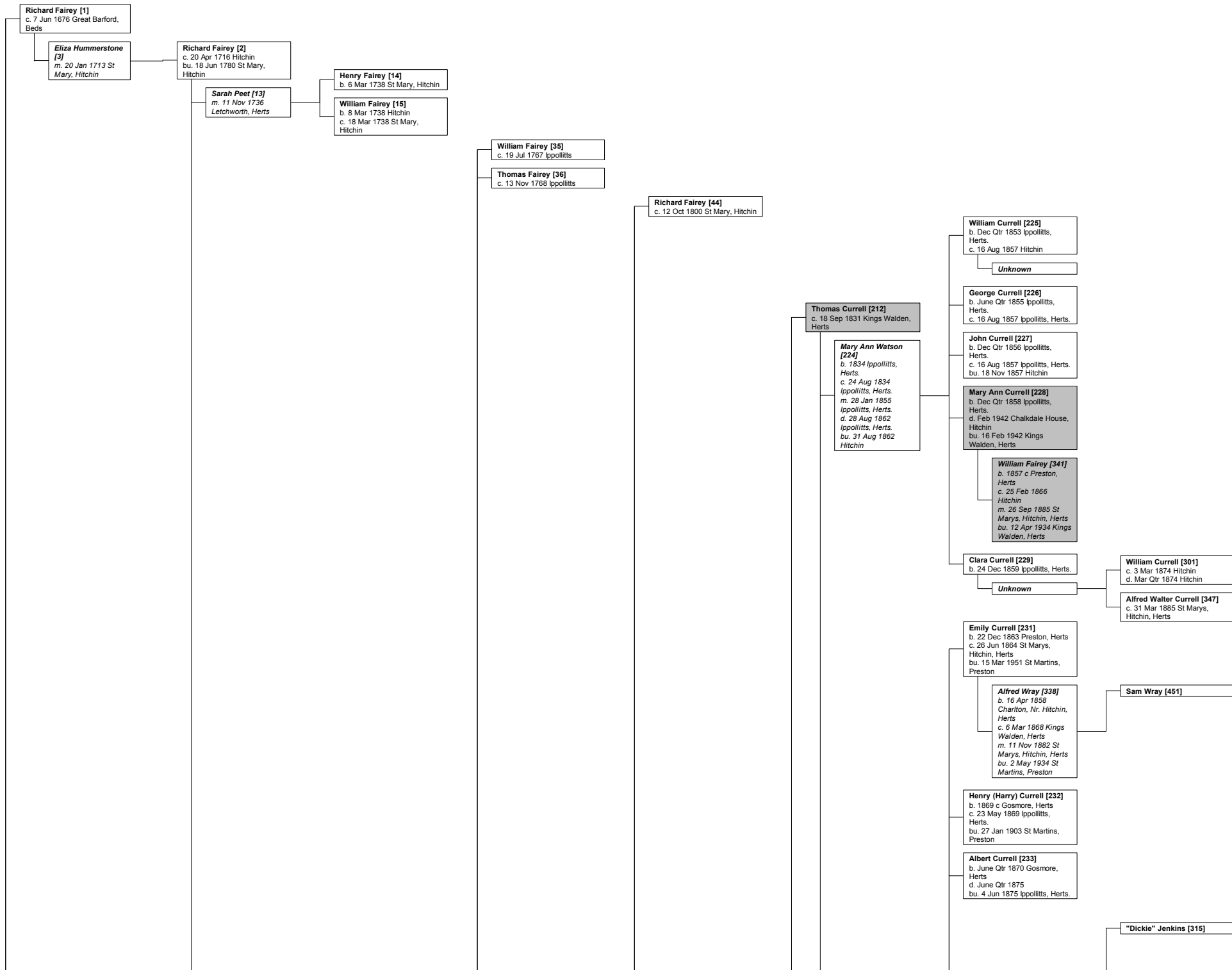


Descendants of William Fairey



Mary Fairey [110]
b. Sept Qtr 1842
Preston, Herts
c. 7 May 1843 Kings
Walden, Herts
m. 2 Nov 1867 St
Marys, Hitchin, Herts
d. Dec Qtr 1924
Preston, Herts

Lizzie Currell [234]
b. Sept Qtr 1872 Gosmore,
Herts
d. 1941 Preston, Herts
bu. 29 Jan 1941 St Martins,
Preston

Ernest John Jenkins [314]
b. 1873 c Preston,
Herts
c. 8 Jun 1873 St
Marys, Hitchin, Herts
m. 12 Jun 1897 St
Marys, Hitchin, Herts
d. 1959 Preston, Herts
bu. 17 Nov 1959 St
Martins, Preston

Phyllis Currell [235]
b. Sept Qtr 1875 Gosmore,
Herts
d. 24 Apr 1969 Preston, Herts
bu. 30 Apr 1959 St Martins,
Preston

Herbert Jenkins [302]
b. 1879 c Preston,
Herts
c. 14 Sep 1879
Hitchin
m. Dec Qtr 1904 St
Marys, Hitchin, Herts
d. 5 Nov 1966
Preston, Herts
bu. 10 Nov 1966 St
Martins, Preston

Frank Currell [236]
b. Dec Qtr 1880 Gosmore,
Herts
c. 14 Jan 1883 St Marys,
Hitchin, Herts

Albert Currell [237]
b. 1881 Preston, Herts
c. 14 Jan 1883 St Marys,
Hitchin, Herts
d. 1941

Louie Payne [328]
b. Sept Qtr 1883 Ley
Green, Kings Walden,
Herts
c. 14 Oct 1883 Kings
Walden, Herts
m. Sept Qtr 1901
Hitchin Reg. District

Frederick Currell [238]
b. Sept Qtr 1884 Preston,
Herts

William Andrews [239]
c. 7 Oct 1855 St Pauls Walden,
Herts

George Andrews [241]
c. 24 Apr 1859 St Marys,
Hitchin, Herts

Adelaide Burton [358]
m. Mar Qtr 1883 St
Marys, Hitchin, Herts

Lucy Andrews [242]
c. 24 Sep 1865 Ppollitts, Herts.

Frederick Jenkins [317]
b. 27 Aug 1905
bu. 2 Nov 1962 St Martins,
Preston

Rene Jenkins [319]

May Jenkins [320]
b. 10 May 1903 Preston, Herts
c. 5 Jun 1904 St Marys,
Hitchin, Herts

Henry (Harry) Jenkins [321]
c. 5 Jun 1904 St Marys,
Hitchin, Herts

Violet Jenkins [322]
b. 3 Dec 1910 Preston, Herts

Eadie Jenkins [323]

John Jenkins [324]

Inez Jenkins [325]
b. 8 Apr 1897 Preston, Herts

Herbert Jenkins [326]
b. 1900 Preston, Herts
c. 12 Aug 1900 St Marys,
Hitchin, Herts

William Jenkins [327]
b. 29 Jan 1893 Preston, Herts

Arthur (Mark) Currell [303]
b. 18 Oct 1895

George Currell [304]
b. 2 Oct 1899 Preston, Herts
c. 12 Aug 1900 St Marys,
Hitchin, Herts

Frank Jenkins [305]
b. 29 Apr 1905 Preston, Herts

Maggie Jenkins [306]
b. 28 Oct 1910 Preston, Herts
d. 1982 St Pauls Walden,
Herts

Dillor Jenkins [307]
b. 20 Jan 1913 Preston, Herts
d. 1939-1945

Herbert William Currell [329]
b. Mar Qtr 1902 Hitchin Reg
District

Violet May Currell [330]
b. Sept Qtr 1905 Hitchin Reg
District

Ernest Harold Currell [331]
b. Mar Qtr 1907 Hitchin Reg
District

Gladys Currell [332]

Kathleen Currell [333]

Leslie Currell [334]

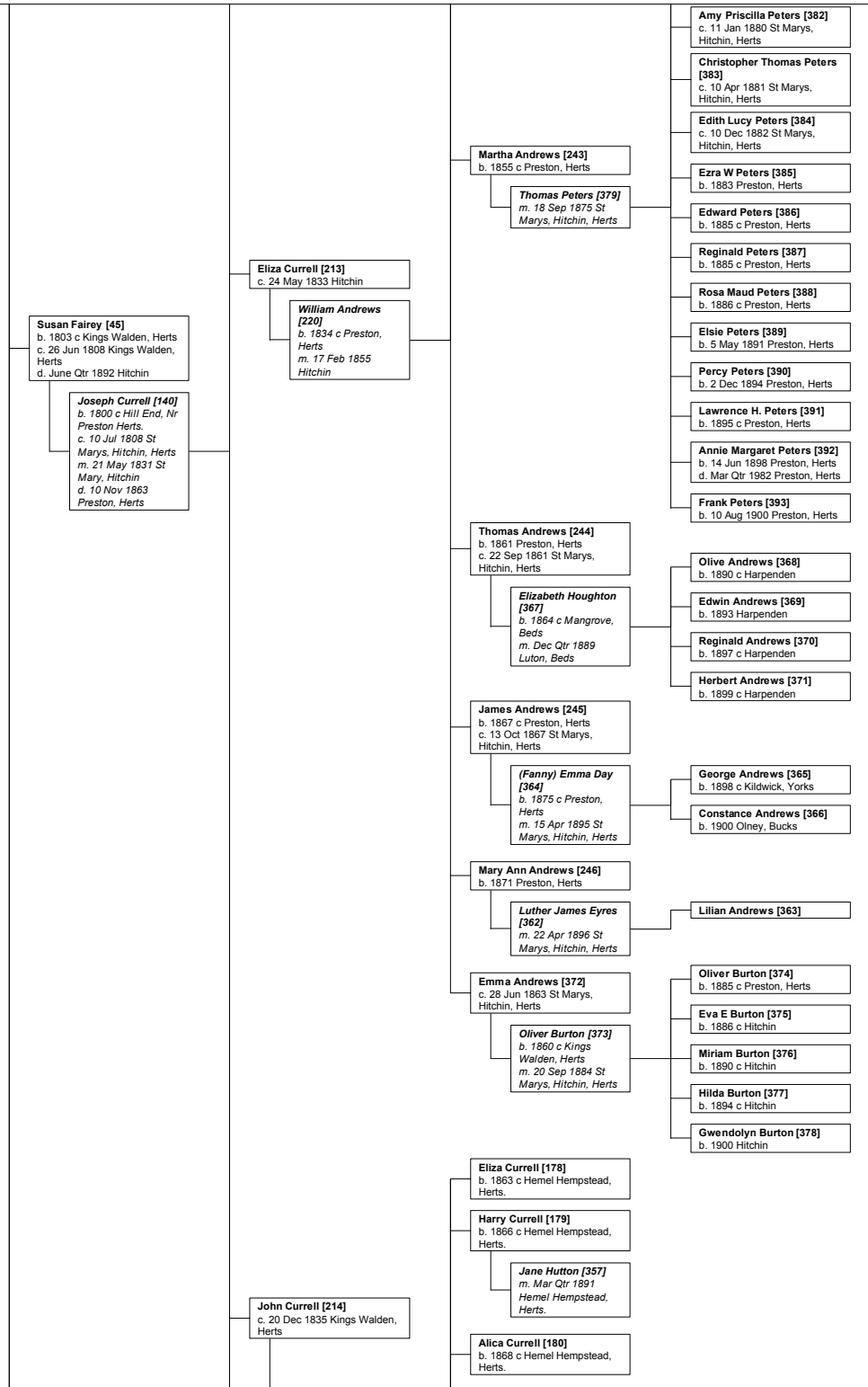
Ellen Andrews [359]
b. 1883

Emily Andrews [360]
b. 1890 c

George Andrews [361]
b. 1893 c

Ethel Mary Peters [380]
c. 9 Jan 1876 St Marys,
Hitchin, Herts

Agnes Louisa Peters [381]
c. 11 Nov 1877 St Marys,
Hitchin, Herts



Mary Buckthorp [177]
b. 1843 c Hemel Hempstead, Herts.
m. June Qtr 1864 Hemel Hempstead, Herts.

George Currell [181]
b. 1875 c Hemel Hempstead, Herts.

Ann Currell [182]
b. 1877 c Hemel Hempstead, Herts.

Emily Currell [183]
b. 1882 c Hemel Hempstead, Herts.

William Currell [184]
b. 1884 c Hemel Hempstead, Herts.

Kate Currell [185]
b. 1871 c Hemel Hempstead, Herts.

Mary Jeeves [240]
b. 1858 c Preston, Herts
c. 27 Feb 1858 St Marys, Hitchin, Herts
d. June Qtr 1863 Preston, Herts

John Jeeves [247]
b. 1860 c Preston, Herts
c. 20 May 1860 St Marys, Hitchin, Herts
d. June Qtr 1871 Preston, Herts

Sarah Ann Jeeves [248]
b. 1863 c Preston, Herts
c. 29 Mar 1863 St Marys, Hitchin, Herts

Herbert Jeeves [249]
b. 1865 Preston, Herts
c. 30 Apr 1865 St Marys, Hitchin, Herts

Edith Eliza Millard [394]
b. 1872 c Bermondsey, London
m. Dec Qtr 1895 St Olave, London

Arthur Henry Jeeves [395]

Herbert Walter Jeeves [396]

Annie Jeeves [397]
b. 1901 Epsom, London

Lucy Jeeves [250]
b. 1866 Preston, Herts
c. 23 Dec 1866 St Marys, Hitchin, Herts

Ann Currell [215]
c. 25 Mar 1840 Hitchin

Emily Jeeves [251]
b. 1870 Preston, Herts
c. 25 Dec 1870 St Marys, Hitchin, Herts

John Jeeves [221]
b. 1831 c Preston, Herts
m. 17 Jul 1857 Hitchin

Frederick Edward Jeeves [252]
b. 1872 c Preston, Herts
c. 8 Sep 1872 St Marys, Hitchin, Herts

Jesse (Son) Jeeves [253]
b. 1875 Preston, Herts
c. 14 Feb 1875 Preston, Herts

Annie Jeeves [254]
b. 1877 Preston, Herts
c. 11 Feb 1877 St Marys, Hitchin, Herts

Joseph Jeeves [255]
b. 1879 Preston, Herts
c. 9 Feb 1879 St Marys, Hitchin, Herts

Margaret Jeeves [256]
b. 1861 Preston, Herts
c. 9 Jan 1861 St Marys, Hitchin, Herts

Elizabeth Jeeves [257]
b. 1883 c Preston, Herts

Mary Jeeves [354]
c. 20 Oct 1857 St Marys, Hitchin, Herts
bu. 20 Oct 1857

William Jeeves [355]
c. 2 Feb 1862 St Marys, Hitchin, Herts
d. Mar Qtr 1862 Preston, Herts

George Jeeves [356]
c. 20 Dec 1868 Preston, Herts
d. 1869-1871 Preston, Herts

Martha Currell [217]
c. 27 Jan 1843 Hitchin

Hephzibal Hill [258]
b. 1869 c Kings Walden, Herts

John Fairey [37]
c. 30 Dec 1769 Ippollitts,
d. June Qtr 1841 Preston,
Herts
bu. 23 May 1841 Kings
Walden, Herts

Jane Grimes [43]
b. 1778 c Stevenage,
Herts
c. 9 Feb 1783
Stevenage, Herts
m. 23 Nov 1799
Stevenage, Herts
d. Mar Qtr 1867
Preston, Herts

Richard Fairey [17]
b. 1741 Hitchin

Elizabeth Valentine [34]
m. 14 Apr 1766 St
Mary, Hitchin

Elizabeth Fairey [46]
c. 26 Aug 1808 Kings Walden,
Herts

Thomas Fairey [47]
b. 1810 c Kings Walden, Herts
d. 14 Nov 1896 Hitchin
Workhouse
bu. 14 Nov 1896 Kings
Walden, Herts

Catherine Ward [79]
b. 1816 c Preston,
Herts
m. 5 Dec 1845 St
Mary, Hitchin
d. Mar Qtr 1879 Kings
Walden, Herts

Mary Fairey [48]
c. 23 Jun 1813 Kings Walden,
Herts
bu. 18 Oct 1814 Kings Walden,
Herts

Henry Hill [222]
b. 1843 c
m. 25 Sep 1865 Kings
Walden, Herts

Catharine Currell [218]
c. 4 Aug 1844 Kings Walden,
Herts

George Shambrook [223]
b. 1844 c St Pauls
Walden, Herts
m. 24 Sep 1870
Ippollitts, Herts.

Lucy Currell [219]
c. 2 Apr 1848 Kings Walden,
Herts

Charles Howard [269]
b. 1836 c Hitchin
m. Mar Qtr 1879
Hitchin

Thomas Fairey [81]
b. Mar Qtr 1847 Kings Walden,
Herts
c. 7 Mar 1847 Kings Walden,
Herts
d. Apr 1913 Hitchin Workhouse
Infirmary
bu. 23 Apr 1913 Kings Walden,
Herts

Elizabeth (Betsey) Carter [85]
b. 1837 c
m. 30 Sep 1871 Kings
Walden, Herts
d. June Qtr 1898
Kings Walden, Herts

Rachel Fairey [82]
b. Mar Qtr 1850 Kings Walden,
Herts
c. 3 Mar 1850 Kings Walden,
Herts

George Fitzjohn [88]
b. 1843 c Hitchin
m. June Qtr 1874
Hitchin Reg District

Emma Fairey [83]
b. Mar Qtr 1853 Kings Walden,
Herts
c. 1 May 1853 Kings Walden,
Herts

William Thompson [89]
b. 1853 c Kings
Walden, Herts
m. Sept Qtr 1872
Hitchin Reg District

Charles Fairey [84]
b. Mar Qtr 1856 Kings Walden,
Herts
c. 11 May 1856 Kings Walden,
Herts

Mary Thompson [90]
b. 1880 c Kings Walden, Herts

Rachel Thompson [91]
b. 1883 c Kings Walden, Herts

Blanche Thompson [92]
b. 1885 c Kings Walden, Herts

Florie Thompson [93]
b. 1890 Kings Walden, Herts

Fanny Thompson [94]
b. 1895 c Kings Walden, Herts

Christopher Hill [259]
b. 1875 c Kings Walden, Herts

Martha Hill [260]
b. 1877 c Kings Walden, Herts

Jonathan Hill [261]
b. 1888 c Kings Walden, Herts

Ellen E. Shambrook [262]
b. 1870 c Ippollitts, Herts.

Annie Shambrook [263]
b. 1872 c Ippollitts, Herts.

Minnie Shambrook [264]
b. 1874 c Ippollitts, Herts.

Mary A Shambrook [265]
b. 1876 c Ippollitts, Herts.

Percy Shambrook [266]
b. 1880 Preston, Herts

Thirza Shambrook [267]
b. 1882 c Hitchin

Beatrice M Shambrook [268]
b. 1884 c Hitchin

George Fairey [86]
b. 1872 c Kings Walden, Herts

Mary Ann Hare [500]
b. 1862 c Little
Wymondley, Herts
m. 11 Nov 1893 Little
Wymondley, Herts

Katie Fairey [87]
b. June Qtr 1880 Kings
Walden, Herts

Maud Thompson [90]
b. 1880 c Kings Walden, Herts

Rachel Thompson [91]
b. 1883 c Kings Walden, Herts

Blanche Thompson [92]
b. 1885 c Kings Walden, Herts

Florie Thompson [93]
b. 1890 Kings Walden, Herts

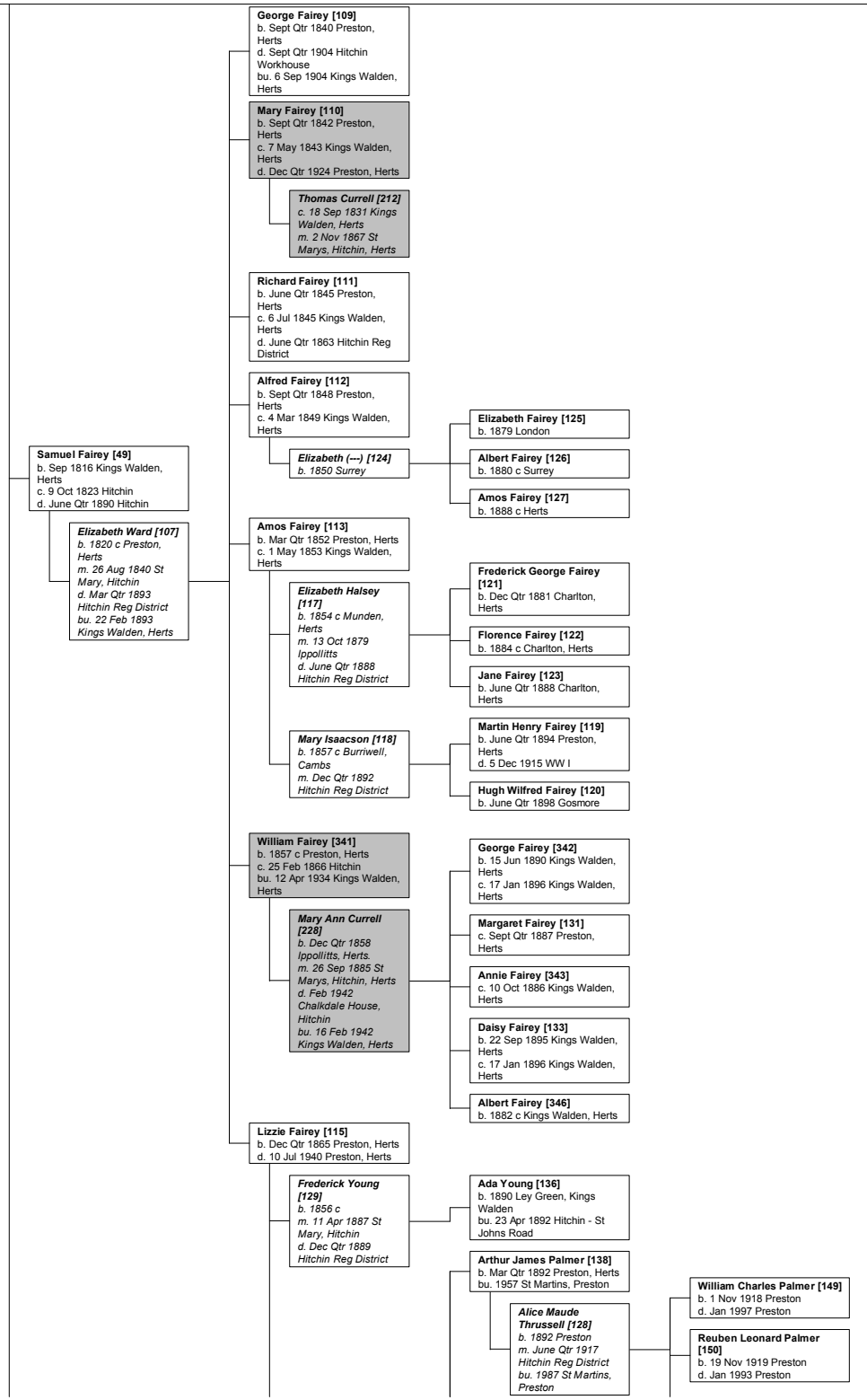
Fanny Thompson [94]
b. 1895 c Kings Walden, Herts

George Thomas Fairey [501]
b. 1894 c Little Wymondley,
Herts
c. 31 Mar 1895 Little
Wymondley, Herts

Florence Kate Fairey [502]
b. 1896 c Little Wymondley,
Herts
c. 26 Jul 1896 Little
Wymondley, Herts

William John Fairey [503]
b. 25 Mar 1896 Little
Wymondley, Herts
c. 10 Jul 1898 Holy Saviour,
Hitchin

William Fairey [511]
c. 31 Mar 1895 Little
Wymondley, Herts



William Fairay [4]

Alice Cuttler [12]
m. 6 Jul 1866 Great
Barford, Beds

George Fairay [50]
c. 9 Oct 1825 Kings Walden,
Herts

Arthur Palmer [137]
b. 1868 c Preston,
Herts
m. 3 Oct 1891 St
Mary, Hitchin
d. 17 Sep 1945
Preston

Reuben Palmer [139]
b. Sept Qtr 1898 Preston,
Herts

Winifred A Palmer [230]
b. Mar Qtr 1921 Preston

Louisa Winch [563]
b. 1860 Ippollitts

Robert Sharp [561]
m. 23 Sep 1882
Ippollitts

Alice Sharp [579]
b. 1882 c Ippollitts

Lilla Sharp [580]
b. 1884 c Ippollitts

Mary Sharp [581]
b. 1887 c Ippollitts

Julia Sharp [582]
b. 1888 c Ippollitts

Ann Sharp [583]
b. 1890 c Ippollitts

Joseph Sharp [584]
b. 1891 c Gosmore

Daisy Sharp [585]
b. 1893 c Gosmore

Arthur Sharp [586]
b. 1896 c Gosmore

Jane Winch [564]
b. 1862 c Gosmore

Amos Smith [559]
b. 1859 c Langford,
Beds
m. 8 May 1880
Ippollitts

Lizzie Smith [562]
b. 1879 c Hitchin

Charles Smith [570]
b. 1881 c Hitchin

Arthur Smith [571]
b. 1884 c Hitchin

Amos Smith [572]
b. 1887 c Hitchin

Clara Smith [573]
b. 1887 c Hitchin

Bertie Smith [574]
b. 1892 Hitchin

Bernard Smith [575]
b. 1900 Hitchin

William Winch [546]
b. 1834 c Preston
d. Mar Qtr 1900 Ippollitts

Rosa Day [557]
b. 1834 c Ippollitts
m. 22 Dec 1858
Ippollitts

Elizabeth Winch [565]
b. 1864 c Gosmore

Edward Lake [576]
b. 1861 c Wyomandley
m. 25 Jul 1885
Ippollitts

Fanny Lake [577]
b. 1885 c Ippollitts

Alfred E Lake [578]
b. 1893 c Gosmore

Reubin Winch [566]
b. 1867 c Gosmore

Kate Stevens [587]
b. 1868 c Hitchin
m. Sept Qtr 1889
Hitchin Reg District

George Winch [588]
b. 1890 c Gosmore

Alfred Winch [589]
b. 1894 c Gosmore

Emily Winch [590]
b. 1895 c Gosmore

Reubin Winch [591]
b. 1898 c Hitchin

Arthur Winch [592]
b. 1898 c Hitchin

Florence M Winch [593]
b. 1900 Hitchin

Leonard Winch [629]
b. 1903 c Ippollitts

Mary Ann Winch [567]
b. 1878 c Gosmore
d. Mar Qtr 1883 Gosmore

Herbert Winch [568]
b. 1875 c Gosmore

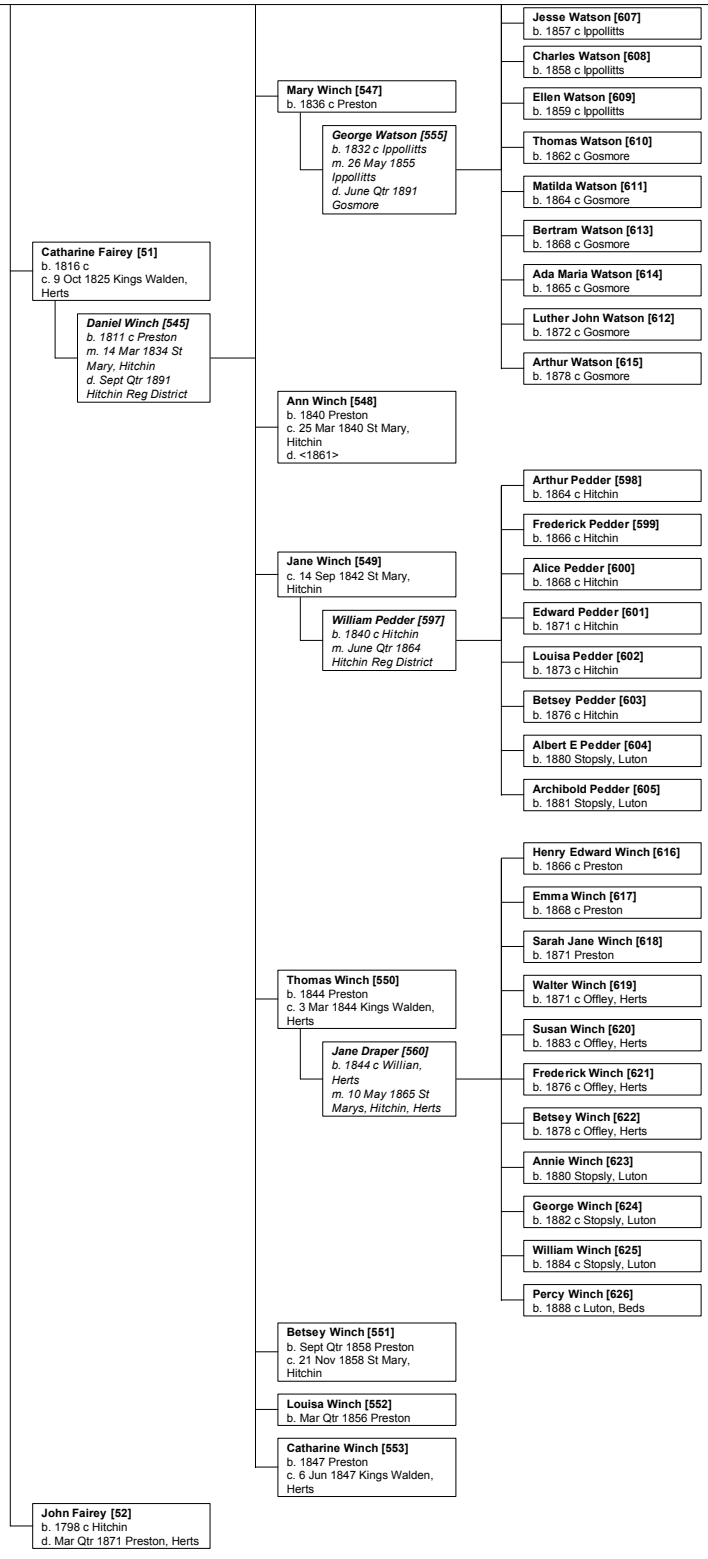
Laura Warren [594]
b. 1872 c Hitchin
m. June Qtr 1899
Chelsea

Edward Winch [595]
b. 1894 c Paddington, London

Minnie Winch [596]
b. 1901 Chelsea

Emily Winch [569]
b. 1881 c Ippollitts

Jane Watson [606]
b. 1855 c Ippollitts



Susannah Mole [16]
m. 26 May 1743 St
Mary, Hitchin
bu. Sep 1755 St Mary,
Hitchin

Mary Fairey [38]
c. 21 May 1775 Ippollitts

? Fairey [39]
c. 7 Jul 1776 Ippollitts

Solomon Fairey [40]
b. 1772 c. Stevenage, Herts
c. 24 May 1778 Ippollitts
d. June Qtr 1858 Aston, Herts

Mary Anne Field [453]
b. 1785 c. Baldock,
Herts
m. 25 Nov 1812
Stevenage, Herts

Richard Fairey [454]
c. 13 Feb 1814 Stevenage,
Herts

Samuel Fairey [455]
c. 1 Oct 1815 Stevenage,
Herts
bu. 11 Nov 1815 Simons
Green, Stevenage

William Fairey [456]
c. 26 Jan 1817 Stevenage,
Herts

Samuel Fairey [457]
c. 2 May 1819 Stevenage,
Herts

Martha Dawson [515]
m. 21 May 1869
Welwyn

Susan Fairey [458]
c. 3 Jun 1821 Stevenage,
Herts

Mary Anne Fairey [459]
c. 6 Apr 1823 Stevenage, Herts
bu. 29 Jun 1823 Simons
Green, Stevenage

Joseph Fairey [460]
c. 9 May 1824 Stevenage,
Herts
bu. 16 Oct 1825 Aston, Herts

Sarah Fairey [461]
c. 22 Apr 1827 Aston, Herts

Sophia Fairey [462]
c. 14 Jun 1829 Aston, Herts

John Wilcocks [465]
m. Dec Qtr 1851 St
Pancras, London

Mary Anne Wilcocks [466]
b. 1851 c London

Elizabeth Wilcocks [467]
b. 1858 c London

John Wilcocks [468]
b. 1861 London

Sophia Wilcocks [469]
b. 1861 London

Thomas Fairey [463]
c. 24 Jun 1832 Aston, Herts

Hubert Fairey [464]
b. 1841 c Aston, Herts

Ann Fairey [41]
c. 19 Nov 1779 Graveley,
Herts

Elizabeth Fairey [42]
c. 10 Jun 1781 Graveley, Herts

Sarah Fairey [18]
b. 1744 Hitchin

William Atkin [19]
m. 26 Aug 1762 St
Mary, Hitchin

? Fairey [22]
c. 4 Aug 1776 Ippollitts

Elizabeth Fairey [23]
c. 19 Nov 1778 Ippollitts

William Fairey [68]
b. 1850 Ippollitts
d. 1851-1861

Sarah Ann Fairey [69]
b. Mar Qtr 1852 Ippollitts

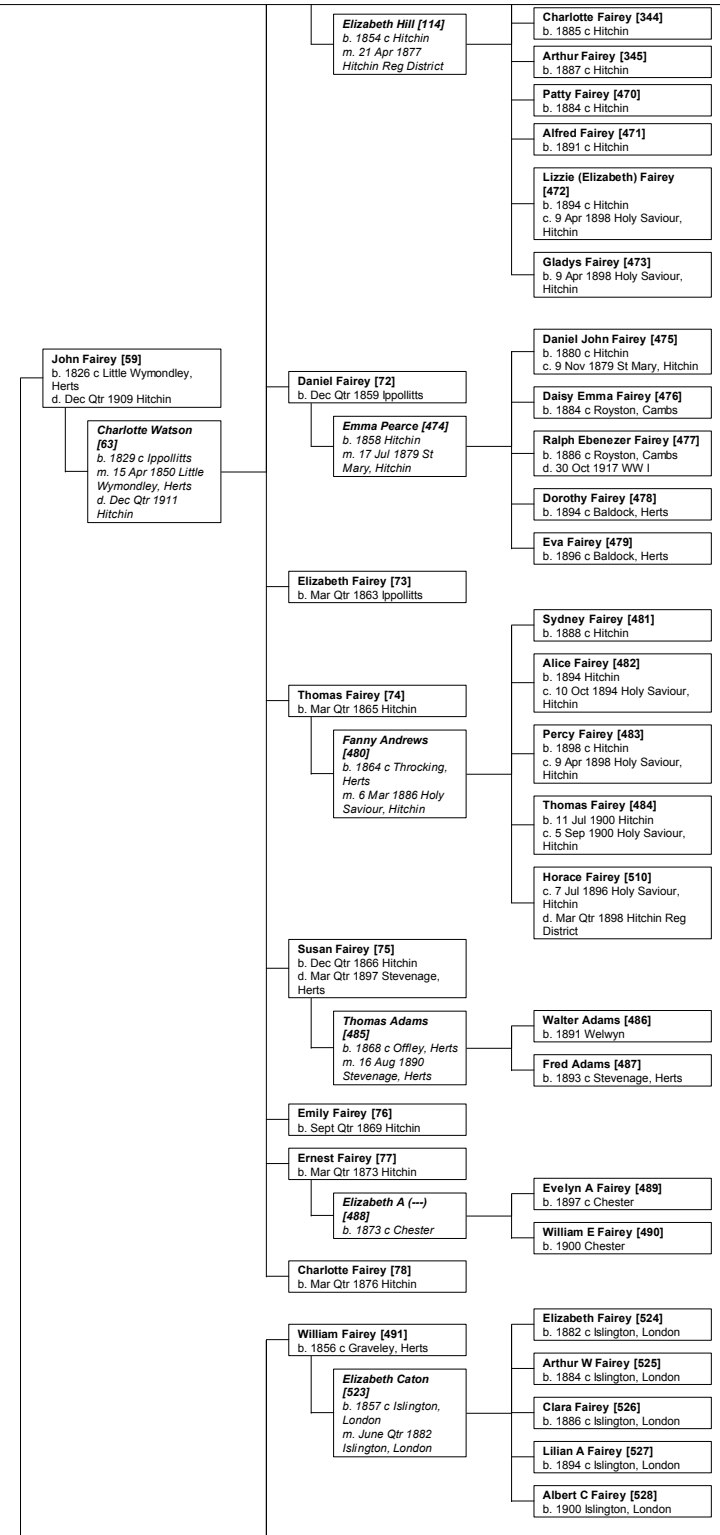
John Fairey [70]
b. Sept Qtr 1853 Ippollitts

Arthur Fairey [71]
b. Sept Qtr 1855 Ippollitts

Annie Fairey [116]
b. 1875 c Hitchin

(Esther) Gertrude Fairey [130]
b. 1877 Hitchin
c. 18 May 1880 Holy Saviour,
Hitchin

Florence Fairey [132]
b. 1881 c Hitchin
c. 18 May 1880 Holy Saviour,
Hitchin



John Fairay [20]
b. 1746 Hitchin

Elizabeth Crowley [21]
m. 19 Nov 1770
Ippollitts

Richard Fairay [24]
c. Apr 1774 Ippollitts

Ann Malin [67]
m. 9 Apr 1796
Ippollitts

William Fairay [53]
c. 25 Mar 1798 Ippollitts
d. 1864-1867 Little
Wymondley, Herts

Sarah Davies [58]
b. 1798 c Little
Wymondley, Herts
m. 26 Dec 1824 Great
Wymondley, Herts

Daniel Fairay [54]
c. 27 Jul 1806 Ippollitts

James Fairay [55]
c. 24 Jan 1808 Ippollitts

James Fairay [60]
b. 1828 c Little Wymondley,
Herts
c. 23 Mar 1829 Little
Wymondley, Herts

Mary Watson [64]
b. 1830 c Gosmore,
Ippollitts
m. 8 Feb 1852
Ippollitts

William Fairay [61]
b. 1830 c Little Wymondley,
Herts

Sarah Fairay [62]
b. 1835 c Little Wymondley,
Herts
c. 15 Nov 1835 Little
Wymondley, Herts

John Sheat [514]
b. 1832
m. 25 Feb 1856
Ippollitts

George Fairay [554]
c. 25 Jan 1848 Ippollitts
bu. 4 Feb 1848 Ippollitts

George Fairay [492]
b. 1861 c Graveley, Herts

Eliza Mary Balls [534]
b. 1861 c Timmore
Green, Wymondley
m. Sept Qtr 1882
Hitchin Reg District

Esther Fairay [493]
b. 1863 c Graveley, Herts

Jane Fairay [494]
b. 1865 c Graveley, Herts

Unknown

Arthur Fairay [495]
b. 1868 c Graveley, Herts

Emily Kesiah (---) [539]
b. 1867 c Poulton,
Glos
m. Sept Qtr 1890
Hitchin Reg District

Clara Fairay [496]
b. 1870 Graveley, Herts
c. 5 Mar 1871 Stevenage,
Herts

William John Smith [513]
b. 1869 c
m. 10 Oct 1891 Little
Wymondley, Herts

John Fairay [497]
b. 1871 c Graveley, Herts
c. 7 Apr 1872 Stevenage, Herts

Ellen Furr [529]
b. 1872 c Stevenage,
Herts
m. Mar Qtr 1896
Hitchin Reg District

Ernest Fairay [498]
b. 1874 c Graveley, Herts

Emma Fairay [499]
b. 1876 c Graveley, Herts

Ezra James Fairay [504]
b. 6 May 1876 Graveley, Herts
c. 4 Mar 1877 Stevenage,
Herts

Sarah Ann Moss [506]
b. 1875 c Aston, Herts
m. 22 Oct 1898
Stevenage, Herts

Mary A Buckingham [97]
b. 1846 c Hitchin

Betsey Buckingham [98]
b. 1848 Hitchin

George Fairay [535]
b. 1884 c Graveley, Herts
d. 16 Sep 1916 WW I

William Fairay [536]
c. 8 Apr 1894 Little
Wymondley, Herts

Eliza Mary Fairay [537]
b. 12 Feb 1891 Todds Green,
Wymondley
c. 12 Feb 1891 Little
Wymondley, Herts

Ernest Fairay [538]
b. 1896 c Graveley, Herts

Arthur F Fairay [540]
b. 1891 c Islington, London

Florence H Fairay [541]
b. 1893 c Hitchin

Winifred Fairay [542]
b. 1900 Stevenage, Herts

Jack Ephraim Fairay [530]
b. 10 Oct 1896 St Pauls
Walden, Herts

Ernest Albert Fairay [531]
b. 14 May 1898 St Pauls
Walden, Herts
c. 3 Jul 1898 St Pauls Walden,
Herts

Bertie Fairay [532]
b. 1900 Stevenage, Herts

Lilian M Fairay [506]
b. 1900 c Stevenage, Herts

(Edith) Gladys Fairay [507]
b. 6 Mar 1906
c. 6 May 1906 Little
Wymondley, Herts

Elsie Fairay [508]
b. June Qtr 1908 Hitchin Reg
District

Bert Fairay [509]

Sarah Fairey [5]
c. 22 Jul 1660 Great Barford,
Beds

John Fairey [6]
c. 18 Nov 1665 Great Barford,
Beds

Thomas Fairey [28]
b. 5 Apr 1748 Hitchin
c. 17 Apr 1748 St Mary, Hitchin

Elizabeth Fairey [29]
b. 26 Feb 1749 Hitchin
c. 11 Mar 1749 St Mary,
Hitchin

William Ewington [544]
m. 12 Nov 1770 St
Mary, Hitchin

Susannah Fairey [30]
c. 29 Nov 1752 St Mary,
Hitchin

Thomas Sheppard [31]
m. 17 Sep 1773 St
Mary, Hitchin

Robert Fairey [32]
d. Oct 1751 Hitchin

Robert Fairey [33]
b. 10 Oct 1754 Hitchin
c. 20 Oct 1754 St Mary, Hitchin
bu. 18 Sep 1755 St Mary,
Hitchin

Sarah Fairey [25]
c. 20 Oct 1771 Ippollitts

George Potter [630]
m. 29 Oct 1796
Ippollitts

Susannah Fairey [26]
c. 24 Jun 1781 Ippollitts

Thomas Fairey [27]
c. 25 Dec 1785 Ippollitts

Susannah Potter [631]
c. Jun 1797 Ippollitts

George Potter [632]
c. 24 Mar 1799 Great
Wymondley, Herts

Elizabeth Potter [633]
c. 3 May 1801 Ippollitts

William Potter [634]
c. 22 May 1803 Ippollitts

Samuel Potter [635]
c. 16 Jun 1805 Great
Wymondley, Herts

George Potter [636]
c. 6 Nov 1808 Great
Wymondley, Herts

Ann Potter [637]
c. 10 Jun 1810 Great
Wymondley, Herts

John Potter [638]
c. 23 Feb 1817 Stevenage,
Herts

Frances Potter [639]
c. 23 Feb 1817 Stevenage,
Herts

Sarah Fairey [56]
c. 31 Jan 1802 Ippollitts

Elizabeth Button [57]
b. 1806 c Hitchin
m. 11 Jun 1832
Hitchin

Mary Fairey [95]
b. 1825 c Hitchin
d. Sept Qtr 1865 Ickleford,
Herts

James Buckingham [96]
b. 1823 c Hitchin
m. 2 May 1846 St
Mary, Hitchin

Ann Buckingham [99]
b. 1851 Hitchin

James Buckingham [100]
b. 1852 c Ickleford, Herts

Anna Maria Buckingham [101]
b. 1854 c Ickleford, Herts

Rose Anne Buckingham [102]
b. 1856 c Ickleford, Herts

Ellen G Buckingham [103]
b. 1858 c Ickleford, Herts

John W Buckingham [104]
b. 1861 c Ickleford, Herts

Emily M Buckingham [105]
b. 1864 c Ickleford, Herts

William Fairey [7]
c. 12 May 1667 Great Barford,
Beds

Humphrey Fairey [8]
c. 7 Aug 1678 Great Barford,
Beds
d. 1 Oct 1678 Great Barford,
Beds

Thomas Fairey [9]
c. 1 Feb 1669 Great Barford,
Beds

Mary Fairey [10]
c. 12 Dec 1672 Great Barford,
Beds

Ann Fairey [11]
c. 6 Feb 1675 Great Barford,
Beds
d. 27 Oct 1682 Great Barford,
Beds